

# BOTTA

## Product list Products and prices

Retail prices valid from 2021-03-24



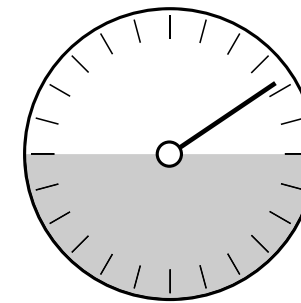
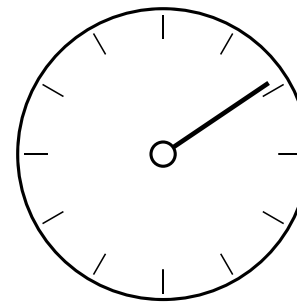
# Product list

## Products and prices

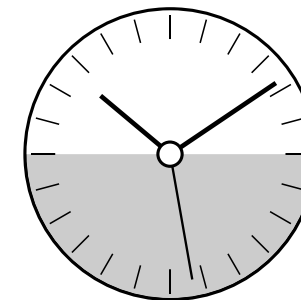
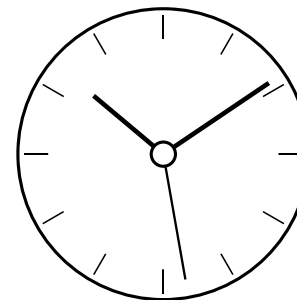
### BOTTA watches scope of delivery

Included: leather strap · watch box · Instruction card  
All models feature anti-reflective coating on both sides of the sapphire crystal as standard!  
A variety of straps for each type is available for an extra charge.

### BOTTA-Quadrology



One-hand watches



Multi-hand watches

12-h-watches

24-h-watches

# UNO 12-hour one-hand watch

**BOTTA**



UNO Quartz 40 mm	dial color	date	strap width (mm)	RRP From Euro	RRP From USD	EAN-codes	Article No.	TITANIUM Comment
<b>UNO Quartz Ø 40mm, NEW titanium case, double domed sapphire crystal, „Swiss Made“ movement, fully screwed</b>								
UNO Quartz 40 mm	White	no	20	498.00 €	595.00 \$	4260271612609	551090	
UNO Quartz 40 mm	Black	no	20	498.00 €	595.00 \$	4260271612616	559090	
UNO Quartz Anniversary 40 mm	Pearl White	no	20	498.00 €	595.00 \$	4260271612623	551190	
UNO Quartz Anniversary 40 mm	Pearl Black	no	20	498.00 €	595.00 \$	4260271612630	559990	
<b>Straps:</b> Leather strap (standard), Bio leather strap (+70.00 € / 85.00 \$), Saddle leather strap (+70.00 € / 85.00 \$), Natural rubber strap (+70.00 € / 85.00 \$), Stainless steel link strap (+130.00 € / 155.00 \$), Milanaise strap (+240.00 € / 285.00 \$)								

# UNO 12-hour one-hand watch

**BOTTA**



UNO Quartz 44 mm Clips	dial color	date	strap width (mm)	RRP From Euro	RRP From USD	EAN-codes	Article No.	Comment
UNO Quartz Ø 44 mm, stainless steel case, double domed sapphire crystal, „Swiss Made“ movement, clipped								
UNO Quartz 44 mm Clips	White	yes	22	448.00 €	535.00 \$	4260271611367	711010	
UNO Quartz 44 mm Clips	Black	yes	22	448.00 €	535.00 \$	4260271611381	719010	
UNO Quartz 44 mm Clips	Black Edition	yes	22	498.00 €	595.00 \$	4260271611404	719010BE	
UNO Quartz Anniversary 44 mm Clips	Pearl White	yes	22	448.00 €	535.00 \$	4260271612043	711110	
UNO Quartz Anniversary 44 mm Clips	Pearl Black	yes	22	448.00 €	535.00 \$	4260271612050	719910	
<b>Straps:</b> Leather strap (standard), Bio leather strap (+70.00 € / 85.00 \$), Saddle leather strap (+70.00 € / 85.00 \$), Natural rubber strap (+70.00 € / 85.00 \$), Stainless steel link strap (+130.00 € / 155.00 \$), Milanaise strap (+240.00 € / 285.00 \$)								



Limited Edition  
100 Pcs.

UNO Automatic 44 mm	dial color	date	strap width (mm)	RRP From Euro	RRP From USD	EAN-codes	Article No.	Comment
<b>AUTOMATIC</b>								
UNO Automatic Ø 44 mm, stainless steel case, 2 sapphire crystals, „Swiss Made“ ETA 2824-2 movement, fully screwed								
UNO Automatic 44 mm	White	yes	22	1180.00 €	1395.00 \$	4260271611480	811010	
UNO Automatic 44 mm	Black	yes	22	1180.00 €	1395.00 \$	4260271611503	819010	
UNO Automatic 44 mm	Black Edition	yes	22	1230.00 €	1465.00 \$	4260271611527	819010BE	
UNO Automatic Anniversary 44 mm	Pearl White	yes	22	1490.00 €	1785.00 \$	4260271612067	811110	
UNO Automatic Anniversary 44 mm	Pearl Black	yes	22	1490.00 €	1785.00 \$	4260271612074	819910	
<b>Straps:</b> Leather strap (standard), Bio leather strap (+70.00 € / 85.00 \$), Saddle leather strap (+70.00 € / 85.00 \$), Natural rubber strap (+70.00 € / 85.00 \$), Stainless steel link strap (+130.00 € / 155.00 \$), Milanaise strap (+240.00 € / 285.00 \$)								

# NOVA 12-hour one-hand watch

**BOTTA**



								TITANIUM
NOVA Quartz 40 mm	dial color	date	strap width (mm)	RRP From Euro	RRP From USD	EAN-codes	Article No.	Comment
<b>NOVA Quartz Ø 40 mm, titanium case, double domed sapphire crystal, „Swiss Made“ movement, fully-screwed</b>								
NOVA Quartz 40 mm	White	no	20	448.00 €	535.00 \$	4260271611800	571000	
NOVA Quartz 40 mm	Black	no	20	448.00 €	535.00 \$	4260271611824	579000	
<b>NOVA Quartz 40 mm fully screwed</b>	Black Edition	no	20	498.00 €	595.00 \$	4260271612647	579090AB	
<b>Straps:</b> Leather strap (standard), Bio leather strap (+70.00 € / 85.00 \$), Saddle leather strap (+70.00 € / 85.00 \$), Natural rubber strap (+70.00 € / 85.00 \$), Stainless steel link strap (+130.00 € / 155.00 \$), Milanaise strap (+240.00 € / 285.00 \$)								



								AUTOMATIC
NOVA Automatic 44 mm	dial color	date	strap width (mm)	RRP From Euro	RRP From USD	EAN-codes	Article No.	Comment
<b>NOVA Automatic Ø 44 mm, stainless steel case, 2 sapphire crystals, „Swiss Made“ ETA 2824-2 movement, fully screwed</b>								
NOVA Automatic 44 mm	White	no	22	1280.00 €	1525.00 \$	4260271611541	851010	
NOVA Automatic 44 mm	Black	no	22	1280.00 €	1525.00 \$	4260271611565	859010	
NOVA Automatic 44 mm	Black Edition	no	22	1360.00 €	1625.00 \$	4260271611992	859000AB	
<b>Straps:</b> Leather strap (standard), Bio leather strap (+70.00 € / 85.00 \$), Saddle leather strap (+70.00 € / 85.00 \$), Natural rubber strap (+70.00 € / 85.00 \$), Stainless steel link strap (+130.00 € / 155.00 \$), Milanaise strap (+240.00 € / 285.00 \$)								

# UNO 24 24-hour one-hand watch

**BOTTA**



UNO 24 Quartz 40 mm	dial color	date	strap width (mm)	RRP From Euro	RRP From USD	EAN-codes	Article No.	TITANIUM Comment
<b>UNO 24 Quartz Ø 40 mm, titanium case, sapphire crystal, „Swiss Made“ movement, clipped</b>								
UNO 24 Quartz 40 mm	White/Orange	yes	20	448.00 €	535.00 \$	4260271612371	421010	
UNO 24 Quartz 40 mm	Black/Orange	yes	20	448.00 €	535.00 \$	4260271612388	429010	
UNO 24 Quartz 40 mm	Black Edition/Orange	yes	20	498.00 €	595.00 \$	4260271612395	429010BE	
UNO 24 Quartz 40 mm	White/Green	yes	20	448.00 €	535.00 \$	4260271612401	422010	
UNO 24 Quartz 40 mm	Black/Green	yes	20	448.00 €	535.00 \$	4260271612418	428010	
UNO 24 Quartz 40 mm	Black Edition/Green	yes	20	498.00 €	595.00 \$	4260271612425	428010BE	
<b>Straps:</b> Leather strap (standard), Bio leather strap (+70.00 € / 85.00 \$), Saddle leather strap (+70.00 € / 85.00 \$), Natural rubber strap (+70.00 € / 85.00 \$), Stainless steel link strap (+130.00 € / 155.00 \$), Milanaise strap (+240.00 € / 285.00 \$)								

# UNO 24 24-hour one-hand watch

**BOTTA**



TITANIUM NEW

UNO 24 Quartz 45 mm	dial color	date	strap width (mm)	RRP From Euro	RRP From USD	EAN-codes	Article No.	Comment
UNO 24 Quartz Ø 45 mm, titanium case, double domed sapphire crystal, „Swiss Made“ movement, screwed bottom, clipped top								
UNO 24 Quartz 45 mm	White/Orange	yes	22	498.00 €	595.00 \$	4260271612562	621310	
UNO 24 Quartz 45 mm	White/Blue	yes	22	498.00 €	595.00 \$	4260271612586	621710	
UNO 24 Quartz 45 mm	Black/Blue	yes	22	498.00 €	595.00 \$	4260271612593	629710	
UNO 24 Quartz 45 mm	Black/Green	yes	22	498.00 €	595.00 \$	4260271612739	628010	NEW
UNO 24 Quartz 45 mm	Black/Green Black Edition	yes	22	548.00 €	655.00 \$	4260271612746	628010BT	NEW
<b>Straps:</b> Leather strap (standard), Bio leather strap (+70.00 € / 85.00 \$), Saddle leather strap (+70.00 € / 85.00 \$), Natural rubber strap (+70.00 € / 85.00 \$), Stainless steel link strap (+130.00 € / 155.00 \$), Milanaise strap (+240.00 € / 285.00 \$)								

AUTOMATIC TITANIUM NEW

UNO 24 Automatic 45 mm	dial color	date	strap width (mm)	RRP From Euro	RRP From USD	EAN-codes	Article No.	Comment
UNO 24 Automatic Ø 45 mm, titanium case, double domed sapphire crystal, „Swiss Made“ ETA 2893-2 movement, fully screwed								
UNO 24 Automatic 45 mm	White/Orange	yes	22	1740.00 €	2075.00 \$	4260271612753	921010	
UNO 24 Automatic 45 mm	Black/Green	yes	22	1740.00 €	2075.00 \$	4260271612760	928010	
UNO 24 Automatic 45 mm	Black/Green Black Edition	yes	22	1820.00 €	2175.00 \$	4260271612777	928010BT	
UNO 24 Automatic 45 mm	White	yes	22	1740.00 €	2075.00 \$	4260271612784	921110	Coming soon
UNO 24 Automatic 45 mm	Black / Black Edition	yes	22	1820.00 €	2175.00 \$	4260271612791	929010BE	Coming soon
<b>Straps:</b> Leather strap (standard), Bio leather strap (+70.00 € / 85.00 \$), Saddle leather strap (+70.00 € / 85.00 \$), Natural rubber strap (+70.00 € / 85.00 \$), Stainless steel link strap (+130.00 € / 155.00 \$), Milanaise strap (+240.00 € / 285.00 \$)								

# TRES 12-hour multi-hand watch

**BOTTA**



TRES Quartz 40 mm Clips	dial color	date	strap width (mm)	RRP From Euro	RRP From USD	EAN-codes	Article No.	TITANIUM Comment
-------------------------	------------	------	------------------	---------------	--------------	-----------	-------------	------------------

TRES Quartz Ø 40 mm, titanium case, double domed sapphire crystal, „Swiss Made“ movement, clipped

TRES Quartz 40 mm Clips	Pearl White	no	20	348.00 €	415.00 \$	4260271612432	561000	<b>SALE</b> (old: 498.00 €)
TRES Quartz 40 mm Clips	Pearl Black	no	20	348.00 €	415.00 \$	4260271612449	569000	<b>SALE</b> (old: 498.00 €)
TRES Quartz 40 mm Clips	Black/Black Edition	no	20	398.00 €	475.00 \$	4260271612456	569000AB	<b>SALE</b> (old: 548.00 €)
TRES Quartz 40 mm fully screwed	Colores bundle	no	20	498.00 €	595.00 \$	4260271612654	569300	

**Straps:** Leather strap (standard), Bio leather strap (+70.00 € / 85.00 \$), Saddle leather strap (+70.00 € / 85.00 \$), Natural rubber strap (+70.00 € / 85.00 \$), Stainless steel link strap (+130.00 € / 155.00 \$), Milanais strap (+240.00 € / 285.00 \$)

TRES Quartz 44 mm Clips	dial color	date	strap width (mm)	RRP From Euro	RRP From USD	EAN-codes	Article No.	Comment
-------------------------	------------	------	------------------	---------------	--------------	-----------	-------------	---------

TRES Quartz Ø 44 mm, stainless steel case, double domed sapphire crystal, „Swiss Made“ movement, clipped

TRES Quartz 44 mm Clips	Pearl White	yes	22	448.00 €	535.00 \$	4260271612463	761010	
TRES Quartz 44 mm Clips	Pearl Black	yes	22	448.00 €	535.00 \$	4260271612470	769010	
TRES Quartz 44 mm Clips	Black/Black Edition	yes	22	498.00 €	595.00 \$	4260271612487	769010AB	

**Straps:** Leather strap (standard), Bio leather strap (+70.00 € / 85.00 \$), Saddle leather strap (+70.00 € / 85.00 \$), Natural rubber strap (+70.00 € / 85.00 \$), Stainless steel link strap (+130.00 € / 155.00 \$), Milanais strap (+240.00 € / 285.00 \$)



# TRES 12-hour multi-hand watch

**BOTTA**



								AUTOMATIC
TRES Automatic 44 mm	dial color	date	strap width (mm)	RRP From Euro	RRP From USD	EAN-codes	Article No.	Comment
TRES Automatic Ø 44 mm, stainless steel case, 2 sapphire crystals, „Swiss Made“ ETA 2824-2 movement, fully screwed								
TRES Automatic 44 mm	Pearl White	yes	22	1180.00 €	1395.00 \$	4260271612494	861010	
TRES Automatic 44 mm	Pearl Black	yes	22	1180.00 €	1395.00 \$	4260271612500	869010	
TRES Automatic 44 mm	Black Edition	yes	22	1260.00 €	1495.00 \$	4260271612517	869010AB	
TRES Automatic 44 mm	Colores bundle	yes	22	1260.00 €	1495.00 \$	4260271612661	869310	
<b>Straps:</b> Leather strap (standard), Bio leather strap (+70.00 € / 85.00 \$), Saddle leather strap (+70.00 € / 85.00 \$), Natural rubber strap (+70.00 € / 85.00 \$), Stainless steel link strap (+130.00 € / 155.00 \$), Milanaise strap (+240.00 € / 285.00 \$)								

# MONDO 12-hour multi-hand GMT watch

**BOTTA**



MONDO Quartz 40 mm	dial color	date	strap width (mm)	RRP From Euro	RRP From USD	EAN-codes	Article No.	Comment
MONDO Ø 40 mm, stainless steel case, sapphire crystal, „Swiss Made“ movement								
MONDO	Black	yes	20	298.00 €	355.00 \$	4260271612296	269010	<b>SALE</b> (old: 398.00 €)
MONDO Black Edition	Black/Black Edition	yes	20	348.00 €	415.00 \$	4260271610797	269010BE	<b>SALE</b> (old: 448.00 €)
<b>Straps:</b> Leather strap (standard), Bio leather strap (+70.00 € / 85.00 \$), Saddle leather strap (+70.00 € / 85.00 \$), Natural rubber strap (+70.00 € / 85.00 \$), Stainless steel link strap (+130.00 € / 155.00 \$), Milanaisé strap (+240.00 € / 285.00 \$)								

# CLAVIUS 12-hour multi-hand watch

**BOTTA**



CLAVIUS Automatic 44 mm	dial color	date	strap width (mm)	RRP From Euro	RRP From USD	EAN-codes	Article No.	Comment
<b>AUTOMATIC</b> <b>NEW</b>								
CLAVIUS Automatic Ø 44 mm, stainless steel case, 2 sapphire crystals, „Swiss Made“ ETA 2824-2 movement, fully screwed								
CLAVIUS Automatic 44 mm	Black	no	22	1280.00 €	1525.00 \$	4260271612739	849000	
CLAVIUS Automatic 44 mm	Black/Black Edition	no	22	1360.00 €	1625.00 \$	4260271612746	849000BE	
<b>Straps:</b> Leather strap (standard), Bio leather strap (+70.00 € / 85.00 \$), Saddle leather strap (+70.00 € / 85.00 \$), Natural rubber strap (+70.00 € / 85.00 \$), Stainless steel link strap (+130.00 € / 155.00 \$), Milanaise strap (+240.00 € / 285.00 \$)								

# TRES 24 24-hour multi-hand watch

**BOTTA**



								TITANIUM
TRES 24 Quartz 40 mm	dial color	date	strap width (mm)	RRP From Euro	RRP From USD	EAN-codes	Article No.	Comment
TRES 24 Quartz Ø 40 mm, titanium case, double domed sapphire crystal, „Swiss Made“ movement, clipped								
TRES 24 Quartz 40 mm	White	yes	20	448.00 €	535.00 \$	4260271612937	481910	
TRES 24 Quartz 40 mm	Black/Yellow	yes	20	448.00 €	535.00 \$	4260271612944	489310	
TRES 24 Quartz 40 mm	Black/Black Edition	yes	20	498.00 €	595.00 \$	4260271612951	489110	
<b>Straps:</b> Leather strap (standard), Bio leather strap (+70.00 € / 85.00 \$), Saddle leather strap (+70.00 € / 85.00 \$), Natural rubber strap (+70.00 € / 85.00 \$), Stainless steel link strap (+130.00 € / 155.00 \$), Milanais strap (+240.00 € / 285.00 \$)								

# TRES 24 24-hour multi-hand watch

**BOTTA**



								TITANIUM
TRES 24 Quartz 45 mm	dial color	date	strap width (mm)	RRP From Euro	RRP From USD	EAN-codes	Article No.	Comment
TRES 24 Quartz Ø 45 mm, titanium case, double domed sapphire crystal, „Swiss Made“ movement, screwed bottom, clipped top								
TRES 24 Quartz 45mm	White	yes	22	498.00 €	595.00 \$	4260271612531	681910	
TRES 24 Quartz 45mm	Black	yes	22	498.00 €	595.00 \$	4260271612548	689110	
TRES 24 Quartz 45mm	Black/Yellow	yes	22	498.00 €	595.00 \$	4260271612555	689310	
<b>Straps:</b> Leather strap (standard), Bio leather strap (+70.00 € / 85.00 \$), Saddle leather strap (+70.00 € / 85.00 \$), Natural rubber strap (+70.00 € / 85.00 \$), Stainless steel link strap (+130.00 € / 155.00 \$), Milanaise strap (+240.00 € / 285.00 \$)								



								AUTOMATIC	TITANIUM
TRES 24 Automatic 45 mm	dial color	date	strap width (mm)	RRP From Euro	RRP From USD	EAN-codes	Article No.	Comment	
TRES 24 Automatic Ø 45 mm, titanium case, double domed sapphire crystal, „Swiss Made“ ETA 2893-2 movement, fully screwed									
TRES 24 Automatic 45 mm	White	yes	22	1740.00 €	2075.00 \$	4260271612968	981910		
TRES 24 Automatic 45 mm	Black/Black Edition	yes	22	1820.00 €	2175.00 \$	4260271612982	989110		
TRES 24 Automatic 45 mm	Black/Yellow	yes	22	1740.00 €	2075.00 \$	4260271612555	989310		
<b>Straps:</b> Leather strap (standard), Bio leather strap (+70.00 € / 85.00 \$), Saddle leather strap (+70.00 € / 85.00 \$), Natural rubber strap (+70.00 € / 85.00 \$), Stainless steel link strap (+130.00 € / 155.00 \$), Milanaise strap (+240.00 € / 285.00 \$)									

# Straps and Accessories



Leather White



Saddle leather Anhracite



Leather Black



Saddle leather Black



Organic leather Black



Rubber White



Milanese mesh  
Stainless Steel natural  
(20mm)



Rubber Black



Milanese mesh  
Stainless Steel Black  
PVD-coated (20 mm)



Stainless Steel Link  
natural (20mm)



Stainless Steel Link  
Black PVD-coated (20 mm)

Straps 18 mm	Features	Material color	lug width (mm)	RRP From Euro	RRP From USD	EAN-codes	Article No.	Comment
<b>18 mm lug width fits some OLD models SMALLER than 40 mm</b> Standard wrist circumference: 18.5 - 20.0 cm								
Leather (opt. black buckle)		Black	18	60.00 €	70.00 \$	4260271612883	StrapL18b	
Stainless steel link		Black PVD-coated	18	160.00 €	190.00 \$	4260271612890	StrapSt18bPVD	
Straps 20 mm	Features	Material color	lug width (mm)	RRP From Euro	RRP From USD	EAN-codes	Article No.	Comment
<b>20 mm lug width fits 40 mm models ONLY</b> Standard wrist circumference: 18.5 - 20.0 cm								
Leather		White	20	60.00 €	70.00 \$	4260271611893	StrapL20w	
Leather (opt. black buckle)		Black	20	60.00 €	70.00 \$	4260271611886	StrapL20b	
Organic leather (opt. black buckle)	<b>Bio Allergy-free</b>	Black	20	100.00 €	120.00 \$	4260271612791	StrapLBio20b StrapLBio20b/b	<b>NEW</b>
Saddle leather		Anthracite	20	100.00 €	120.00 \$	4260271612678	StrapLSa20a	
Saddle leather		Black	20	100.00 €	120.00 \$	426027112685	StrapLSa20b	
Rubber	<b>Allergy-free</b>	White	20	100.00 €	120.00 \$	4260271612838	StrapR20w	
Rubber (opt. black buckle)	<b>Allergy-free</b>	Black	20	100.00 €	120.00 \$	4260271611862	StrapR20b	
Stainless steel link	<b>incl. tool</b>	Natural	20	160.00 €	190.00 \$	4260271611923	StrapSt20n	
Stainless steel link	<b>incl. tool</b>	Black PVD-coated	20	160.00 €	190.00 \$	4260271611930	StrapSt20bPVD	
Milanais mesh Stainless steel	<b>incl. tool</b>	Natural	20	270.00 €	325.00 \$	4260271612869	StrapMil20n	<b>NEW</b>
Milanais mesh Stainless steel	<b>incl. tool</b>	Black PVD-coated	20	270.00 €	325.00 \$	4260271612876	StrapMil20bPVD	<b>NEW</b>

# Straps and Accessories



Leather White



Saddle leather Anhracite



Leather Black



Saddle leather Black



Organic leather Black



Rubber White



Milanese mesh  
Stainless Steel natural  
(22mm)



Rubber Black



Milanese mesh  
Stainless Steel Black  
PVD-coated (22 mm)



Watch winder



Stainless Steel Link  
natural (22mm)



Stainless Steel Link  
Black PVD-coated (22 mm)

Straps 22 mm	Features	Material color	lug width (mm)	RRP From Euro	RRP From USD	EAN-codes	Article No.	Comment
<b>22 mm lug width fits ALL models LARGER than 40 mm</b> Standard wrist circumference: 18.5 - 20.0 cm								
Leather		White	22	60.00 €	70.00 \$	4260271611916	StrapL22w	
Leather (opt. black buckle)		Black	22	60.00 €	70.00 \$	4260271611909	StrapL22b	
Organic leather (opt. black buckle)	<b>Bio Allergy-free</b>	Black	22	100.00 €	120.00 \$	4260271612784	StrapLBio22b StrapLBio22b/b	<b>NEW</b>
Saddle leather		Anthracite	22	100.00 €	120.00 \$	4260271612807	StrapLSa22a	
Saddle leather		Black	22	100.00 €	120.00 \$	4260271612814	StrapLSa22b	
Rubber	<b>Allergy-free</b>	White	22	100.00 €	120.00 \$	4260271612821	StrapR22w	
Rubber (opt. black buckle)	<b>Allergy-free</b>	Black	22	100.00 €	120.00 \$	4260271611879	StrapR22b	
Stainless steel link	<b>incl. tool</b>	natural	22	160.00 €	190.00 \$	4260271612692	StrapSt22n	
Stainless steel link	<b>incl. tool</b>	Black PVD-coated	22	160.00 €	190.00 \$	4260271612708	StrapSt22b/ PVD	
Milanais mesh Stainless steel	<b>incl. tool</b>	natural	22	270.00 €	325.00 \$	4260271612845	StrapMil22n	
Milanais mesh Stainless steel	<b>incl. tool</b>	Black PVD-coated	22	270.00 €	325.00 \$	4260271612852	StrapMil22b/ PVD	
Accessories	Category	Material		RRP From Euro	RRP From USD	EAN-codes	Article No.	Comment
Strap exchange tool	Tool	Metal		15.00 €	18.00 \$	4260271612906	AccsExT	
Strap shortening tool	Tool	Metal, plastics		12.00 €	15.00 \$	4260271612913	AccsShortT	
Watch winder	Accessory	Wood, glass, metal		200.00 €	240.00 \$	4260271612920	AccsWW	<b>NEW</b>